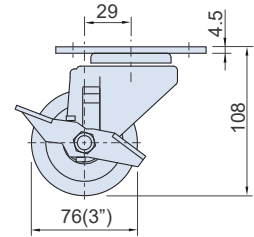
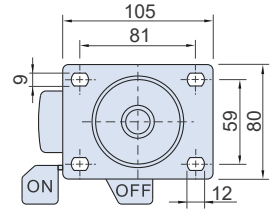
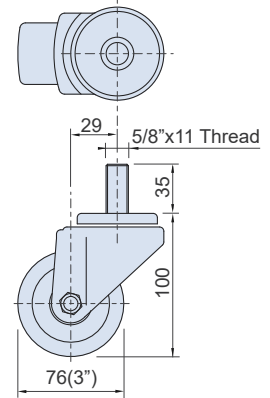




GX-T3201 / GX-T3203



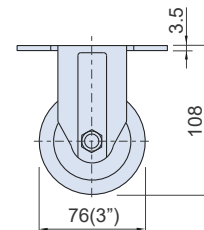
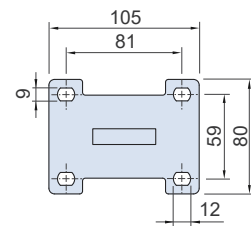
GX-T3202 / GX-T3206



GX-T3206



GX-T3205



特徵

- 輪架表面處理鍍鋅。
- 電木輪。電木獨特配方新原料搭配布質纖維，並以熱固性方式生產，此電木輪因結構性強，具有不易破碎、耐荷重、耐磨性強、耐高低溫(-20~200°C)、耐環境抗力等優點，屬於腳輪所有材質中相對高階的產品。

FEATURES

- The housing is zinc plated.
- Wheel is made of phenolic resin and the specific fabric through thermosetting process, phenolic wheels are high load capacities, resistant to extreme temperatures(-20~200°C) and high compression. It is the high-end material of caster.

SPECIFICATION:

Unit:mm

產品編號 Item No.	輪架材質 Housing Material	輪子材質 Wheel Material	型式 Type	尺寸 Dimensions			荷重 Load Capacity (kgf/pc)	重量 Weight (kg)
				輪徑 Wheel Diameter	輪寬 Wheel Width	迴轉半徑 Radius of gyration		
GX-T3201	鐵 Steel	電木 Phenolic Resin	培林 Bearing	76(3")	45	70	250	1.15
GX-T3202						70		0.93
GX-T3203						100		1.22
GX-T3205						100		0.81
GX-T3206						100		1.01