

# 數位扭力扳手 *Digital Torque Wrench*



- LCD背光顯示
- 順時針及逆時針皆可操作
- 峰值保持(K) 與 扭力追隨(F)模式 (可訂製特殊K模式)
- 四種扭力單位，可供選擇切換:N-m, kgf-cm, lbf-in, lbf-ft  
WM-SD系列為三種扭力單位:cN-m, kgf-cm, in-lb
- 蜂鳴聲、LED燈警示(到達預設扭力值80%時)
- 震動警示(到達預設扭力值90%時)
- 省電模式：2分鐘自動關機 (可訂製不開機模式)
- 記錄使用次數、歷史最大扭力
- 電池款：一般型:AA電池\*2  
迷你型:AAA電池\*2
- 充電款:Type-C充電線
- 藍牙款:透過藍牙連線手機，隨時查詢歷史扭力紀錄(最多可瀏覽1000筆)  
可透過Type-C將歷史扭力紀錄傳輸到電腦，以利品質控管
- LCD backlight display
- Both operator for cw, ccw
- Two modes : F(Track) / K(Peak)
- 4 units change: N-m, kgf-cm, lbf-in, lbf-ft  
The WM-SD series offers 3 available torque units: cN-m, kgf-cm, and in-lb
- Warning function : Beep, LED indicator  
(When reach the torque setting value 80%)
- Vibration function : When reach the torque setting value 90%
- Automatically powers off when not in use for 2 minutes  
( The non-shutdown mode can be customized )
- Recording usage frequency and the historical maximum torque
- Battery Type: Standard Type: AA x 2 batteries  
Mini Type: AAA x 2 batteries
- Recharge Type: Type-C cable
- Bluetooth Type: Access historical data at any time through Bluetooth connection to the mobile phone.(View up to 1000 records)  
connect via Type-C to save data on the computer



BT-APP



影片-藍牙款  
Video-BT



電腦軟體-藍牙款  
Software-BT



影片-標準款  
Video

充電款技術規格 / Rechargeable Battery Technical Data (Battery : Standard 16650/ Mini 10440)			
電池壽命：充滿電操作時間 Battery life (fully charged used time)	8~10 hrs	充電輸入電壓 Charging Input Voltage	5V=1A
標稱電壓 Nominal Voltage	3.7V	內阻 Internal Resistance	< 60mΩ
充電時間 Recharge Time	Standard 90-120 mins / Mini 60-90 mins		
使用環境 (溫度) Storage conditions (Temperature)	Recharge : 10°C~ 45°C Discharge : -10°C ~ 60°C Storage : -20°C ~ 25°C (< 1 year) -20°C ~ 40°C (< 3 months) -20°C ~ 50°C (< 1 month)		
使用環境 (濕度) Storage conditions (Humidity)	Work : 20% ~ 85%RH (not condensed) Storage : 40% ~ 85%RH (not condensed)		
標稱容量 Nominal Capacity	Standard 1600mAh / Mini 640mAh		
壽命測試 Lifetime Testing	電池標準充放電300次循環後高於容量80% Capacity remains above 80% after 300 standard charge-discharge cycles.		
內建雙重保護IC電路 Built-in Dual Protection IC Circuit	提供過壓充電、過壓放電、過流充電、過熱過載、 短路等保護 Provides protection against over-voltage charging, over-voltage discharging, over-current charging, overheating, overload, and short circuits.		

電池款技術規格 / Dry Cell Technical Data			
電池壽命：持續操作 Battery Life (continuous operation)	110 hrs (WS: 37 hrs)	操作溫度 Operating temperature	-10°C~ 60°C
電池壽命：待機模式 Battery Life (Standard Mode)	1 year	儲存溫度 Storage temperature	-20°C~70°C
濕度 Humidity	無凝露可到90% Up to 90% (not condensed)		

共用規格 / Common Specification	
預設值儲存組數 No. of memory parameters	30
LED警示燈	2(1Green + 1Red)
震動警示 Vibration Warning	YES(到達預設扭力90%·震動警示啟動) (Activate when set value reaches 90%)
操作模式 Operating modes	峰值保持(K) / 追隨模式 (F) / 角度模式 (A) Peak hold (K) / Track (F) / Angle (A)
單位選擇 Torque Units	Nm, kg-cm, lb-ft, lb-in (WM-SD series: cNm, kg-cm, lb-in)
掉落測試 Drop test	1m
振動測試 Shaking test	10G(10Hz→55Hz→10Hz/0.8mm)
耐用度 Durability	Over 10000 cycles
環境測試 Environmental test	PASS 電磁相容測試 EMC test PASS

WM-Q(-BT)



棘輪切換  
Reversible ratchet



棘輪方頭  
Square head



快速脫離  
Quick release

WM-I(-BT)



棘輪切換  
Reversible ratchet



棘輪方頭/插槽  
Square head / Insert



快速脫離  
Quick release

WM-SD(-BT)



強磁吸附  
Magnetic adsorption



Bit 六角插槽  
Bit Insert(Hex)



前拉脫離  
Front pull out

WM-B(-BT)



棘輪切換  
Reversible ratchet



Bit 六角插槽  
Bit Insert(Hex)



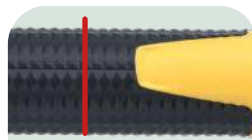
夾持設計  
Clamping Mechanism



藍牙充電款：①電源重置  
②USB插頭 (Type C)  
Bluetooth Type：①Reset  
②USB insert (Type C)



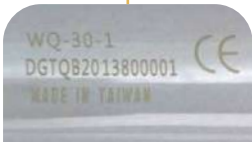
震動警示功能  
Vibration function



校正定位點  
Calibration point



防油防滑設計握柄(專利)  
Non-slip grip handle (patent)



單支出廠序號查詢  
Unique code for each wrench



簡易操作  
Use friendly



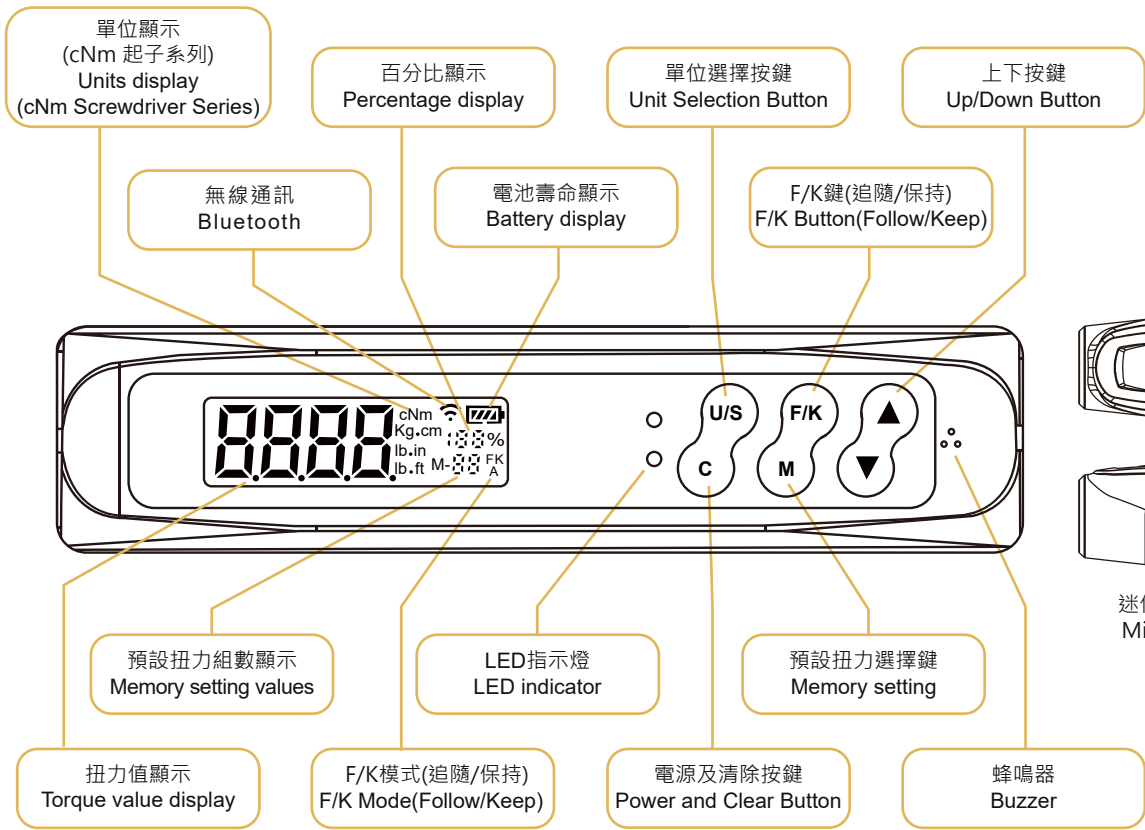
LED提醒/蜂鳴警示  
LEDs (Green/Red)/Buzzer



電池款-使用AAA\*2電池  
藍牙款-使用10440電池  
Battery Type-AAA\*2 batteries  
Bluetooth Type-10440 battery

藍牙充電款：內建電芯保護特規電池，請勿自行更換市售充電電池  
Bluetooth Type：Built-in battery with special specifications for cell protection, please do not replace it with commercially available rechargeable batteries.





迷你型控制按鈕及顯示面板  
Mini control buttons and display panel

加購配件·請參考30頁  
Extra purchase accessories  
Please refer to P.30



Bit 六角插槽  
Bit Insert



套筒用轉接頭  
Hex shank socket adapter

WM-B



WM-B(-BT)



### 藍牙功能 Bluetooth features



扳手內建記憶體·  
可將扳手歷史數據  
連線手機進行輸出

The wrench has  
built-in memory,  
allowing it to connect  
to a mobile phone to  
output historical data.

- 配件：收納用鐵製工具箱x1, 出廠校驗報告(符合ISO品質認證規範)x1, 說明書(中/英)x1, 套筒用轉接頭(六角轉四角方頭1/4")x1, 藍牙-充電款: Type-C 充電線, 電池款: AAA電池x2, 迷你螺絲起子(更換電池用)x1
- Content : Storage steel box x1, Certificate of calibration report (Using ISO specification) x1, User guide(Bilingual) x1, 1/4" Hex Shank Socket Adapter x1, Bluetooth Type: Type-C cable, Battery Type: Mini screwdriver(replace the battery) x1

### SPECIFICATIONS:

※Unit Conversion : 1 Nm = 10.2 kgf-cm = 0.738 lbf-ft = 8.851 lbf-in

產品編號 Item No.		精度 Accuracy	Bit 六角插槽 Bit Insert	棘輪齒數 Ratchet Teeth	顯示及設定範圍 Setting Range	建議使用範圍 Suggested Range	解析度 Resolution	扳手長度 Length (mm)	扳手重量 Weight (g)
電池款 Battery Type	藍牙-充電款 Bluetooth Type								
WM-B06-1	WM-B06-1-BT	CW:±3% CCW:±4%	1/4"	72	0.3~6 Nm	0.9~6 Nm	0.01 Nm	244	200
WM-B15-1	WM-B15-1-BT				0.75~15 Nm	2.25~15 Nm			
WM-B25-1	WM-B25-1-BT				1.25~25 Nm	3.75~25 Nm			

註：精度的扭力範圍在最大操作值的20%~100%

Notes: Accuracy guaranteed at 20% to 100% of full scale.



W-SB25-1



W-SB25-2



W-SB25-3



W-SB25-4



W-SB25-5

SPECIFICATIONS:

產品編號 Item No.	規格 Specification	六角頭部 Insert Hex Shank	長度 Length	適用產品 Apply to
W-SB25-1	六角型 / Hex : 1.5mm, 2mm, 2.5mm, 3mm, 4mm, 5mm, 6mm	1/4"	~25mm	WM-SD series WM-B series
W-SB25-2	六角型 / Hex : 2mm, 2.5mm, 3mm, 4mm, 5mm, 6mm, 8mm			
W-SB25-3	一字 / Slotted : 4, 5.5, 7 十字 / Phillips : PH00, PH0, PH1, PH2			
W-SB25-4	星型 / Star Tamperproof : T10, T15, T20, T25, T27, T30, T40			
W-SB25-5	星型 / Star Tamperproof : T4, T5, T6, T7, T8, T9, T10			