



數位扭力扳手 *Digital Torque Wrench*

- LCD背光顯示
- 順時針及逆時針皆可操作
- 峰值保持(K) 與扭力追隨(F)模式 (可訂製特殊K模式)
- 四種扭力單位，可供選擇切換:N-m, kgf-cm, lbf-in, lbf-ft
WM-SD系列為三種扭力單位:cN-m, kgf-cm, in-lb
- 蜂鳴聲、LED燈警示(到達預設扭力值80%時)
- 震動警示(到達預設扭力值90%時)
- 省電模式：2分鐘自動關機 (可訂製不關機模式)
- 記錄使用次數、歷史最大扭力
- 藍牙款:透過藍牙連線手機，隨時查詢歷史扭力紀錄(最多可瀏覽1000筆)
可透過Type-C將歷史扭力紀錄傳輸到電腦，以利品質控管
- LCD backlight display
- Both operator for cw, ccw
- Two modes : F(Track) / K(Peak)
- 4 units change: N-m, kgf-cm, lbf-in, lbf-ft (WM-SD series: cN-m, kgf-cm, in-lb)
- Warning function : Beep, LED indicator (When reach the torque setting value 80%)
- Vibration function : When reach the torque setting value 90%
- Automatically powers off when not in use for 2 minutes
(The non-shutdown mode can be customized)
- Recording usage frequency and the historical maximum torque
- Bluetooth Type: Access historical data at any time through Bluetooth connection to the mobile phone.(View up to 1000 records) connect via Type-C to save data on the computer



mobile wrench



BT-APP



影片-藍牙款
Video-BT



電腦軟體-藍牙款
Software-BT



影片-標準款
Video

充電款技術規格 / Rechargeable Battery Technical Data (Battery : Standard 16650/ Mini 10440)			
電池壽命：充滿電操作時間 Battery life (fully charged used time)	8~10 hrs	充電輸入電壓 Charging Input Voltage	5V=1A
標稱電壓 Nominal Voltage	3.7V	內阻 Internal Resistance	< 60mΩ
充電時間 Recharge Time	Standard 90-120 mins / Mini 60-90 mins		
使用環境 (溫度) Storage conditions (Temperature)	Recharge : 10°C~ 45°C Discharge : -10°C ~ 60°C Storage : -20°C ~ 25°C (< 1 year) -20°C ~ 40°C (< 3 months) -20°C ~ 50°C (< 1 month)		
使用環境 (濕度) Storage conditions (Humidity)	Work : 20% ~ 85%RH (not condensed) Storage : 40% ~ 85%RH (not condensed)		
標稱容量 Nominal Capacity	Standard 1600mAh / Mini 320mAh X2		
壽命測試 Lifetime Testing	電池標準充電300次循環後高於容量80% Capacity remains above 80% after 300 standard charge-discharge cycles.		
內建雙重保護IC電路 Built-in Dual Protection IC Circuit	提供過壓充電、過壓放電、過流充電、過熱過載、短路等保護 Provides protection against over-voltage charging, over-voltage discharging, over-current charging, overheating, overload, and short circuits.		

電池款技術規格 / Dry Cell Technical Data			
電池壽命：持續操作 Battery Life (continuous operation)	110 hrs (WS: 37 hrs)	操作溫度 Operating temperature	-10°C~ 60°C
電池壽命：待機模式 Battery Life (Standard Mode)	1 year	儲存溫度 Storage temperature	-20°C~70°C
濕度 Humidity	無凝露可到90% Up to 90% (not condensed)		

共用規格 / Common Specification	
預設值儲存組數 No. of memory parameters	30
LED警示燈	2(1Green + 1Red)
震動警示 Vibration Warning	YES(到達預設扭力90%·震動警示啟動) (Activate when set value reaches 90%)
操作模式 Operating modes	峰值保持(K) / 追隨模式 (F) / 角度模式 (A) Peak hold (K) / Track (F) / Angle (A)
單位選擇 Torque Units	Nm, kg-cm, lb-ft, lb-in (WM-SD series: cNm, kg-cm, lb-in)
掉落測試 Drop test	1m
振動測試 Shaking test	10G(10Hz→55Hz→10Hz/0.8mm)
耐用度 Durability	Over 10000 cycles
環境測試 Environmental test	PASS 電磁相容測試 EMC test PASS

The diagram illustrates two models of torque wrenches: WQ (-BT) WA and WI (-BT). The WQ model features a silver head and a black handle with a yellow grip, while the WI model has a silver head and a black handle with a yellow grip. Both have digital displays and control buttons. Callouts highlight several key features:

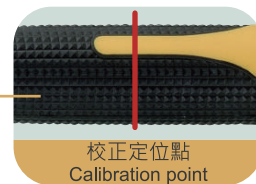
- 快速脫離 (Quick release):** Shown at the top of the wrench head.
- 棘輪切換 (Reversible ratchet):** Shown on the side of the wrench head.
- 單支出廠序號查詢 (Unique code for each wrench):** A close-up of the wrench head showing a unique code: WQ-30-1, DGTQ82013800001, MADE IN TAIWAN, and a CE mark.
- LED提醒/蜂鳴警示 (LEDs (Green/Red) / Buzzer):** A close-up of the control panel showing a red LED indicator.
- 防油防滑設計握柄 (專利) (Non-slip grip handle (patent)):** A close-up of the yellow and black textured grip.
- 震動警示功能 (Vibration function):** A close-up of the handle showing a red vibration icon.
- 棘輪方頭/插槽 (Square head / Socket):** A close-up of the square drive end of the wrench.

WQ-BT
WI-BT



藍牙充電款：內建電芯保護特規電池，請勿自行更換市售充電電池
Bluetooth Type : Built-in battery with special specifications for cell protection,
please do not replace it with commercially available rechargeable batteries.

WQ
WA
WI



WM-Q(-BT)



棘輪切換
Reversible ratchet



棘輪方頭
Square head



快速脫離
Quick release

WM-I(-BT)



棘輪切換
Reversible ratchet



棘輪方頭/插槽
Square head / Insert



快速脫離
Quick release

WM-SD(-BT)



強磁吸附
Magnetic adsorption



Bit 六角插槽
Bit Insert(Hex)



前拉脫離
Front pull out

WM-B(-BT)



棘輪切換
Reversible ratchet



Bit 六角插槽
Bit Insert(Hex)



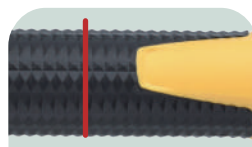
夾持設計
Clamping Mechanism



藍牙充電款：①電源重置
②USB插頭(Type C)
Bluetooth Type：①Reset
②USB insert(Type C)



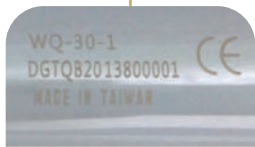
震動警示功能
Vibration function



校正定位點
Calibration point



防油防滑設計握柄(專利)
Non-slip grip handle(patent)



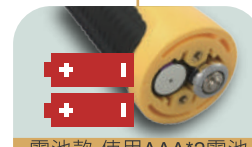
單支出廠序號查詢
Unique code for each wrench



簡易操作
Use friendly



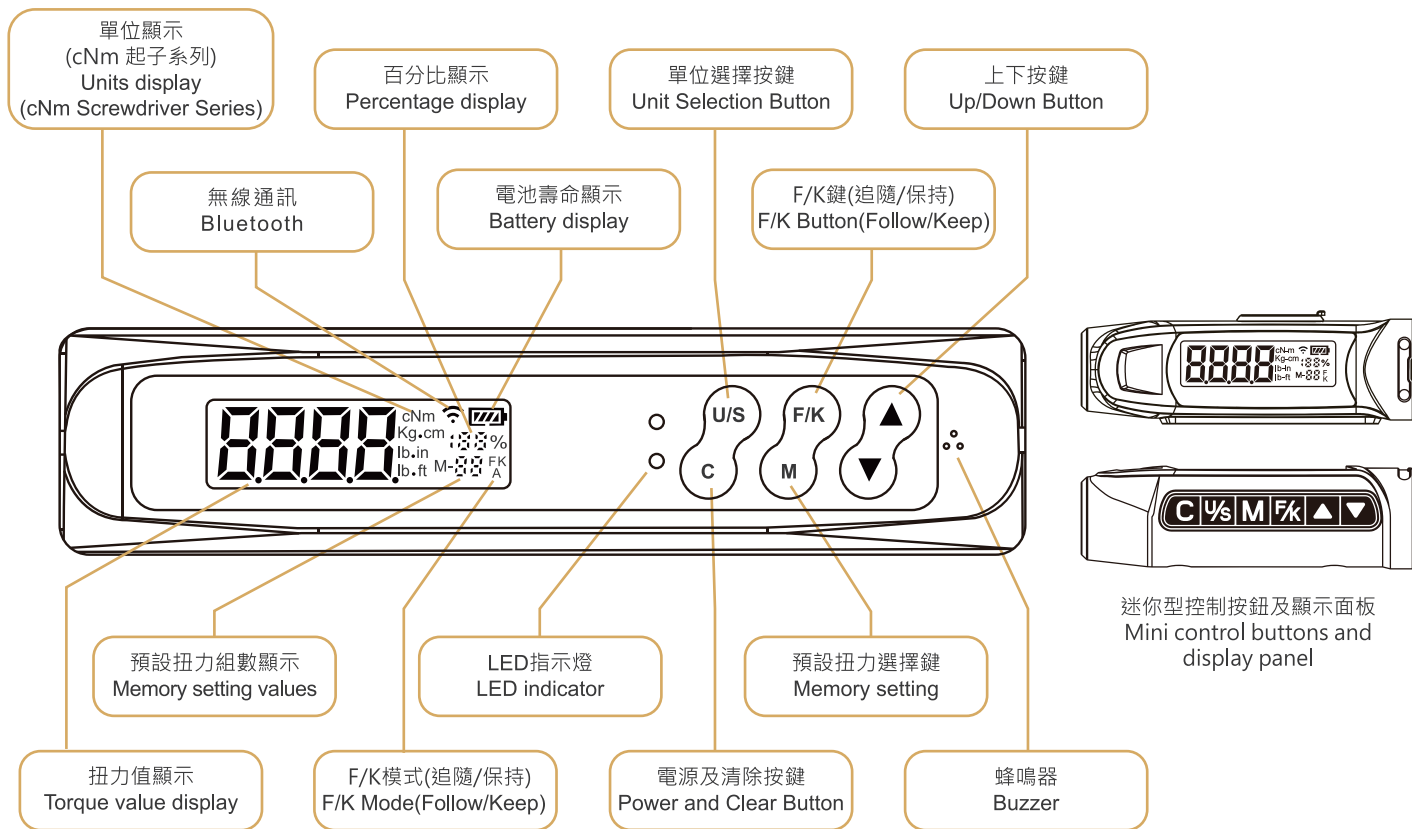
LED提醒/蜂鳴警示
LEDs(Green/Red)/Buzzer



電池款-使用AAA*2電池
藍牙款-使用10440電池
Battery Type-AAA*2 batteries
Bluetooth Type-10440 battery

藍牙充電款：內建電芯保護特規電池，請勿自行更換市售充電電池
Bluetooth Type：Built-in battery with special specifications for cell protection, please do not replace it with commercially available rechargeable batteries.







WQ-60-2-BT



配件：收納用鐵製工具箱x1, 出廠校驗報告(符合ISO品質認證規範)x1, 說明書(中/英)x1, Type-C 充電線

Content : Storage steel box x1, Certificate of calibration report (Using ISO specification) x1, User guide(Bilingual) x1, Type-C cable

SPECIFICATIONS:

※Unit Conversion : 1 Nm = 10.2 kgf-cm = 0.738 lbf-ft = 8.851 lbf-in

產品編號 Item No.	精度 Accuracy	棘輪方頭 Drive	棘輪齒數 Ratchet Teeth	顯示及設定範圍 Setting Range	建議使用範圍 Suggested Range	解析度 Resolution	扳手長度 Length(mm)	扳手重量 Weight(±50g)		
藍牙-充電款 Bluetooth Type										
WQ-30-1-BT	CW:±1.5% CCW:±2.5%	1/4"	72	1.5~30 Nm	4.5~30 Nm	0.01 Nm	394	770		
WQ-30-2-BT		3/8"		3~60 Nm	9~60 Nm			795		
WQ-60-2-BT				1/2"	6.8~135 Nm	20~135 Nm	0.1 Nm	418	898	
WQ-135-2-BT		10~200 Nm			30~200 Nm	438		1114		
WQ-135-3-BT		17~340 Nm			50~340 Nm	549		1272		
WQ-200-3-BT		30~600 Nm			90~600 Nm	650		1470		
WQ-340-3-BT		3/4"	24	40~800 Nm	120~800 Nm	1 Nm	940	3902		
WQ-600-4-BT				50~1000 Nm	150~1000 Nm				1235	4695
WQ-800-4-BT										
WQ-1000-4-BT										

藍牙功能
Bluetooth features



扳手內建記憶體，可將扳手歷史數據連線手機進行輸出

The wrench has built-in memory, allowing it to connect to a mobile phone to output historical data.

註：精度的扭力範圍在最大操作值的20%~100%

Notes: Accuracy guaranteed at 20% to 100% of full scale.