

數位扭力扳手 *Digital Torque Wrench*



- LCD背光顯示
- 順時針及逆時針皆可操作
- 峰值保持(K) 與 扭力追隨(F)模式 (可訂製特殊K模式)
- 四種扭力單位，可供選擇切換:N-m, kgf-cm, lbf-in, lbf-ft
WM-SD系列為三種扭力單位:cN-m, kgf-cm, in-lb
- 蜂鳴聲、LED燈警示(到達預設扭力值80%時)
- 震動警示(到達預設扭力值90%時)
- 省電模式：2分鐘自動關機 (可訂製不開機模式)
- 記錄使用次數、歷史最大扭力
- 電池款：一般型:AA電池*2
迷你型:AAA電池*2
- 充電款:Type-C充電線
- 藍牙款:透過藍牙連線手機，隨時查詢歷史扭力紀錄(最多可瀏覽1000筆)
可透過Type-C將歷史扭力紀錄傳輸到電腦，以利品質控管
- LCD backlight display
- Both operator for cw, ccw
- Two modes : F(Track) / K(Peak)
- 4 units change: N-m, kgf-cm, lbf-in, lbf-ft
The WM-SD series offers 3 available torque units: cN-m, kgf-cm, and in-lb
- Warning function : Beep, LED indicator
(When reach the torque setting value 80%)
- Vibration function : When reach the torque setting value 90%
- Automatically powers off when not in use for 2 minutes
(The non-shutdown mode can be customized)
- Recording usage frequency and the historical maximum torque
- Battery Type: Standard Type: AA x 2 batteries
Mini Type: AAA x 2 batteries
- Recharge Type: Type-C cable
- Bluetooth Type: Access historical data at any time through Bluetooth connection to the mobile phone.(View up to 1000 records)
connect via Type-C to save data on the computer



BT-APP



影片-藍牙款
Video-BT



電腦軟體-藍牙款
Software-BT



影片-標準款
Video

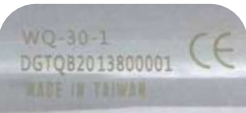
充電款技術規格 / Rechargeable Battery Technical Data (Battery : Standard 16650/ Mini 10440)			
電池壽命：充滿電操作時間 Battery life (fully charged used time)	8~10 hrs	充電輸入電壓 Charging Input Voltage	5V=1A
標稱電壓 Nominal Voltage	3.7V	內阻 Internal Resistance	< 60mΩ
充電時間 Recharge Time	Standard 90-120 mins / Mini 60-90 mins		
使用環境 (溫度) Storage conditions (Temperature)	Recharge : 10°C~ 45°C Discharge : -10°C ~ 60°C Storage : -20°C ~ 25°C (< 1 year) -20°C ~ 40°C (< 3 months) -20°C ~ 50°C (< 1 month)		
使用環境 (濕度) Storage conditions (Humidity)	Work : 20% ~ 85%RH (not condensed) Storage : 40% ~ 85%RH (not condensed)		
標稱容量 Nominal Capacity	Standard 1600mAh / Mini 640mAh		
壽命測試 Lifetime Testing	電池標準充放電300次循環後高於容量80% Capacity remains above 80% after 300 standard charge-discharge cycles.		
內建雙重保護IC電路 Built-in Dual Protection IC Circuit	提供過壓充電、過壓放電、過流充電、過熱過載、 短路等保護 Provides protection against over-voltage charging, over-voltage discharging, over-current charging, overheating, overload, and short circuits.		

電池款技術規格 / Dry Cell Technical Data			
電池壽命：持續操作 Battery Life (continuous operation)	110 hrs (WS: 37 hrs)	操作溫度 Operating temperature	-10°C~ 60°C
電池壽命：待機模式 Battery Life (Standard Mode)	1 year	儲存溫度 Storage temperature	-20°C~70°C
濕度 Humidity	無凝露可到90% Up to 90% (not condensed)		

共用規格 / Common Specification	
預設值儲存組數 No. of memory parameters	30
LED警示燈	2(1Green + 1Red)
震動警示 Vibration Warning	YES(到達預設扭力90%·震動警示啟動) (Activate when set value reaches 90%)
操作模式 Operating modes	峰值保持(K) / 追隨模式 (F) / 角度模式 (A) Peak hold (K) / Track (F) / Angle (A)
單位選擇 Torque Units	Nm, kg-cm, lb-ft, lb-in (WM-SD series: cNm, kg-cm, lb-in)
掉落測試 Drop test	1m
振動測試 Shaking test	10G(10Hz→55Hz→10Hz/0.8mm)
耐用度 Durability	Over 10000 cycles
環境測試 Environmental test	PASS 電磁相容測試 EMC test PASS



快速脫離
Quik release



單支出廠序號查詢
Unique code for each wrench



LED提醒/蜂鳴警示
LEDs(Green/Red)/Buzzer



防油防滑設計握柄(專利)
Non-slip grip handle(patent)



震動警示功能
Vibration function



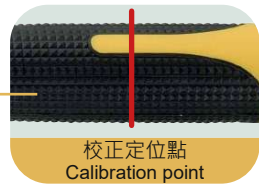
快速脫離
Quik release



棘輪切換
Reversible ratchet

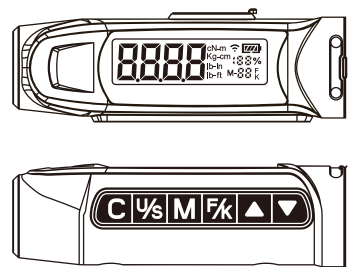
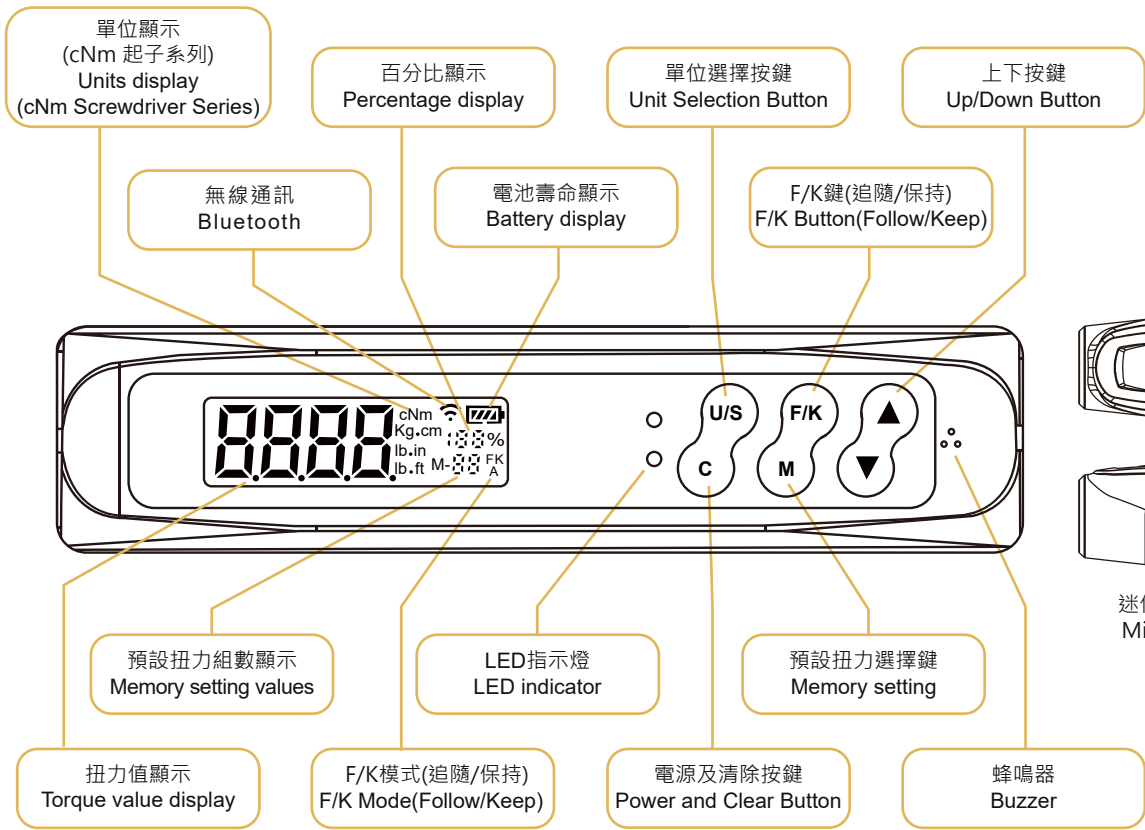


棘輪方頭/插槽
Square head / Socket



藍牙充電款：內建電芯保護特規電池，請勿自行更換市售充電電池
Bluetooth Type : Built-in battery with special specifications for cell protection, please do not replace it with commercially available rechargeable batteries.





迷你型控制按鈕及顯示面板
Mini control buttons and display panel



- ▣ 可訂製藍牙功能款
- ▣ 鎖固時·可量測旋轉多少角度的功能
- ▣ 配件：收納用鐵製工具箱x1, 出廠校驗報告(符合ISO品質認證規範)x1, 說明書(中/英)x1, AA電池x2
- ▣ Customizable Bluetooth
- ▣ Can measurement the degree after tighten the screw or nut
- ▣ Content : Storage steel box x1, Certificate of calibration report (Using ISO specification) x1, User guide(Bilingual) x1

SPECIFICATIONS:

※Unit Conversion : 1 Nm = 10.2 kgf-cm = 0.738 lbf-ft = 8.851 lbf-in

產品編號 Item No. 電池款 Battery Type	精度 Accuracy	棘輪方頭 Drive	棘輪齒數 Ratchet Teeth	顯示及設定範圍 Setting Range	建議使用範圍 Suggested Range	解析度 Resolution	扳手長度 Length(mm)	扳手重量 Weight(±50g)		
WA-30-1	CW:±1.5% CCW:±2.5%	1/4"	72	1.5~30 Nm / 0.1°~360°	4.5~30 Nm	0.01 Nm / 0.1°	410	720		
WA-60-2		3/8"		3~60 Nm / 0.1°~360°	9~30 Nm			740		
WA-135-2		1/2"		72	6.8~135 Nm / 0.1°~360°		20~135 Nm	434	890	
WA-135-3			10~200 Nm / 0.1°~360°		30~200 Nm	454	1080			
WA-200-3			3/4"		24	17~340 Nm / 0.1°~360°	50~340 Nm	0.1 Nm / 0.1°	565	1300
WA-340-3						30~600 Nm / 0.1°~360°	90~600 Nm		666	1420
WA-600-4		1235	24	24	40~800 Nm / 0.1°~360°	120~800 Nm	1 Nm / 0.1°	940	3800	
WA-800-4					50~1000 Nm / 0.1°~360°	150~1000 Nm		4800		
WA-1000-4										

註：精度的扭力範圍在最大操作值的20%~100%

Notes: Accuracy guaranteed at 20% to 100% of full scale.