



數位扭力扳手 *Digital Torque Wrench*

- LCD背光顯示
- 順時針及逆時針皆可操作
- 峰值保持(K) 與扭力追隨(F)模式 (可訂製特殊K模式)
- 四種扭力單位，可供選擇切換:N-m, kgf-cm, lbf-in, lbf-ft
WM-SD系列為三種扭力單位:cN-m, kgf-cm, in-lb
- 蜂鳴聲、LED燈警示(到達預設扭力值80%時)
- 震動警示(到達預設扭力值90%時)
- 省電模式：2分鐘自動關機 (可訂製不關機模式)
- 記錄使用次數、歷史最大扭力
- 藍牙款:透過藍牙連線手機，隨時查詢歷史扭力紀錄(最多可瀏覽1000筆)
可透過Type-C將歷史扭力紀錄傳輸到電腦，以利品質控管
- LCD backlight display
- Both operator for cw, ccw
- Two modes : F(Track) / K(Peak)
- 4 units change: N-m, kgf-cm, lbf-in, lbf-ft (WM-SD series: cN-m, kgf-cm, in-lb)
- Warning function : Beep, LED indicator (When reach the torque setting value 80%)
- Vibration function : When reach the torque setting value 90%
- Automatically powers off when not in use for 2 minutes
(The non-shutdown mode can be customized)
- Recording usage frequency and the historical maximum torque
- Bluetooth Type: Access historical data at any time through Bluetooth connection to the mobile phone.(View up to 1000 records) connect via Type-C to save data on the computer



mobile wrench



BT-APP



影片-藍牙款
Video-BT



電腦軟體-藍牙款
Software-BT



影片-標準款
Video

充電款技術規格 / Rechargeable Battery Technical Data (Battery : Standard 16650/ Mini 10440)			
電池壽命：充滿電操作時間 Battery life (fully charged used time)	8~10 hrs	充電輸入電壓 Charging Input Voltage	5V=1A
標稱電壓 Nominal Voltage	3.7V	內阻 Internal Resistance	< 60mΩ
充電時間 Recharge Time	Standard 90-120 mins / Mini 60-90 mins		
使用環境 (溫度) Storage conditions (Temperature)	Recharge : 10°C~ 45°C Discharge : -10°C ~ 60°C Storage : -20°C ~ 25°C (< 1 year) -20°C ~ 40°C (< 3 months) -20°C ~ 50°C (< 1 month)		
使用環境 (濕度) Storage conditions (Humidity)	Work : 20% ~ 85%RH (not condensed) Storage : 40% ~ 85%RH (not condensed)		
標稱容量 Nominal Capacity	Standard 1600mAh / Mini 320mAh X2		
壽命測試 Lifetime Testing	電池標準充電300次循環後高於容量80% Capacity remains above 80% after 300 standard charge-discharge cycles.		
內建雙重保護IC電路 Built-in Dual Protection IC Circuit	提供過壓充電、過壓放電、過流充電、過熱過載、短路等保護 Provides protection against over-voltage charging, over-voltage discharging, over-current charging, overheating, overload, and short circuits.		

電池款技術規格 / Dry Cell Technical Data			
電池壽命：持續操作 Battery Life (continuous operation)	110 hrs (WS: 37 hrs)	操作溫度 Operating temperature	-10°C~ 60°C
電池壽命：待機模式 Battery Life (Standard Mode)	1 year	儲存溫度 Storage temperature	-20°C~70°C
濕度 Humidity	無凝露可到90% Up to 90% (not condensed)		

共用規格 / Common Specification	
預設值儲存組數 No. of memory parameters	30
LED警示燈	2(1Green + 1Red)
震動警示 Vibration Warning	YES(到達預設扭力90%·震動警示啟動) (Activate when set value reaches 90%)
操作模式 Operating modes	峰值保持(K) / 追隨模式 (F) / 角度模式 (A) Peak hold (K) / Track (F) / Angle (A)
單位選擇 Torque Units	Nm, kg-cm, lb-ft, lb-in (WM-SD series: cNm, kg-cm, lb-in)
掉落測試 Drop test	1m
振動測試 Shaking test	10G(10Hz→55Hz→10Hz/0.8mm)
耐用度 Durability	Over 10000 cycles
環境測試 Environmental test	PASS 電磁相容測試 EMC test PASS

WQ (-BT)
WA

WI (-BT)

WQ-30-1
DGTQ82013800001
MADE IN TAIWAN

單支出廠序號查詢
Unique code for each wrench

快速脫離
Quick release

快速脫離
Quick release

棘輪切換
Reversible ratchet

棘輪切換
Reversible ratchet

LED提醒/蜂鳴警示
LEDs(Green/Red)/Buzzer

防油防滑設計握柄(專利)
Non-slip grip handle(patent)

震動警示功能
Vibration function

棘輪方頭/插槽
Square head / Socket

棘輪切換
Reversible ratchet

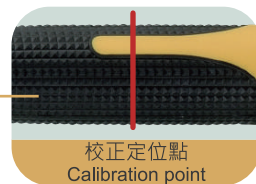
快速脫離
Quick release

WQ-BT
WI-BT



藍牙充電款：內建電芯保護特規電池，請勿自行更換市售充電電池
Bluetooth Type : Built-in battery with special specifications for cell protection,
please do not replace it with commercially available rechargeable batteries.

WQ
WA
WI



WM-Q(-BT)



棘輪切換
Reversible ratchet



棘輪方頭
Square head



快速脫離
Quick release

WM-I(-BT)



棘輪切換
Reversible ratchet



棘輪方頭/插槽
Square head / Insert



快速脫離
Quick release

WM-SD(-BT)



強磁吸附
Magnetic adsorption



Bit 六角插槽
Bit Insert(Hex)



前拉脫離
Front pull out

WM-B(-BT)



棘輪切換
Reversible ratchet



Bit 六角插槽
Bit Insert(Hex)



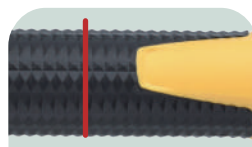
夾持設計
Clamping Mechanism



藍牙充電款：①電源重置
②USB插頭(Type C)
Bluetooth Type：①Reset
②USB insert(Type C)



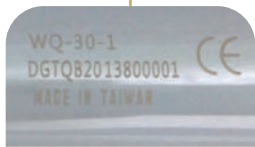
震動警示功能
Vibration function



校正定位點
Calibration point



防油防滑設計握柄(專利)
Non-slip grip handle(patent)



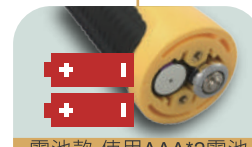
單支出廠序號查詢
Unique code for each wrench



簡易操作
Use friendly



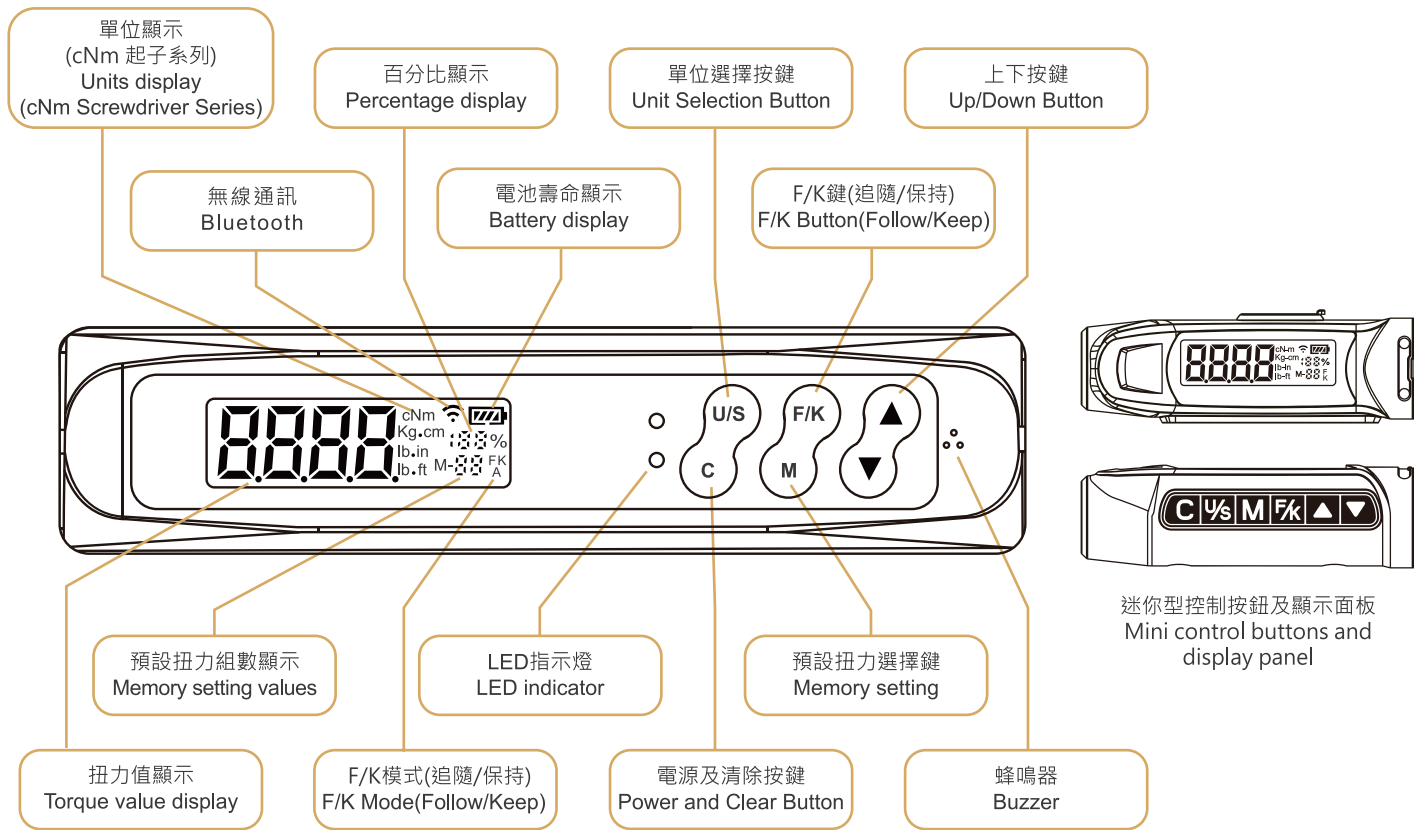
LED提醒/蜂鳴警示
LEDs(Green/Red)/Buzzer



電池款-使用AAA*2電池
藍牙款-使用10440電池
Battery Type-AAA*2 batteries
Bluetooth Type-10440 battery

藍牙充電款：內建電芯保護特規電池，請勿自行更換市售充電電池
Bluetooth Type：Built-in battery with special specifications for cell protection, please do not replace it with commercially available rechargeable batteries.







加購配件：請參考27頁
Optional add-on
Please refer to P.27



棘輪方頭/插槽
Drive / Insert

WI-135-3-BT



僅附此棘輪頭
Only Accessory

- 配件：收納用鐵製工具箱x1, 出廠校驗報告(符合ISO品質認證規範)x1, 說明書(中/英)x1, 棘輪接頭 x1, Type-C 充電線
- Content : Storage steel box x1, Certificate of calibration report (Using ISO specification) x1, User guide(Bilingual) x1, Ratchet insert tool x1, Type-C cable

SPECIFICATIONS:

※Unit Conversion : 1 Nm = 10.2 kgf-cm = 0.738 lbf-ft = 8.851 lbf-in

產品編號 Item No. 藍牙-充電款 Bluetooth Type	精度 Accuracy	插槽 Insert	棘輪方頭 Drive	棘輪齒數 Ratchet Teeth	顯示及設定範圍 Setting Range	建議使用範圍 Suggested Range	解析度 Resolution	扳手長度 Length (mm)	扳手重量 Weight (±50g)	
WI-30-1-BT	CW:±2% CCW:±3%	9x12mm	1/4"	72	1.5~30 Nm	4.5~30 Nm	0.01 Nm	387	778	
WI-60-2-BT			3/8"		3~60 Nm	9~60 Nm		397	810	
WI-135-2-BT					6.8~135 Nm	20~135 Nm	0.1 Nm	409	884	
WI-30-3-BT		14x18mm	1/2"		48	1.5~30 Nm	6~30 Nm	0.01 Nm	419	1110
WI-60-3-BT						3~60 Nm	12~60 Nm			
WI-135-3-BT						6.8~135 Nm	20~135 Nm	0.1 Nm	543	1270
WI-200-3-BT						10~200 Nm	30~200 Nm			
WI-340-3-BT						17~340 Nm	50~340 Nm			
WI-400-3-BT						20~400 Nm	60~400 Nm			
WI-600-4-BT						30~600 Nm	90~600 Nm			

藍牙功能
Bluetooth features



扳手內建記憶體，
可將扳手歷史數據
連線手機進行輸出

The wrench has
built-in memory,
allowing it to connect
to a mobile phone to
output historical data.

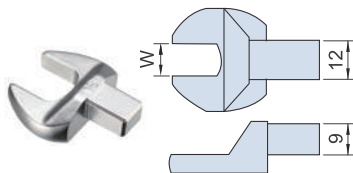
註：精度的扭力範圍在最大操作值的20%~100%

Notes: Accuracy guaranteed at 20% to 100% of full scale.

**W-Y
W-R Series**

扭力接頭 Insert Tools

9X12 開口式扭力接頭
Open-ended Insert tools



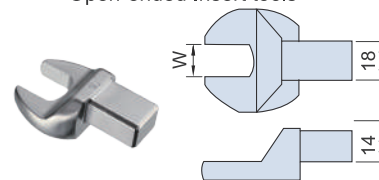
產品編號 Item No.	W (mm)	適用產品 Apply to
W-Y0107	7	WM-I06-1 WM-I15-1 WM-I25-1 WI-30-1 WI-60-2 WI-135-2 WD-I30-1-BT
W-Y0108	8	
W-Y0109	9	
W-Y0110	10	
W-Y0111	11	
W-Y0112	12	
W-Y0113	13	
W-Y0114	14	
W-Y0115	15	
W-Y0116	16	
W-Y0117	17	
W-Y0118	18	
W-Y0119	19	
W-Y0121	21	
W-Y0122	22	
W-Y0124	24	

9X12 (開口)梅花式扭力接頭
(Open-)Ring Insert tools



產品編號 Item No.	W (mm)	適用產品 Apply to	
W-R0107	7	WM-I06-1 WM-I15-1 WM-I25-1 WI-30-1 WI-60-2 WI-135-2 WD-I30-1-BT	
W-R0108	8		
W-R0109	9		
W-R0110	W-YR0110		10
W-R0111	W-YR0111		11
W-R0112	W-YR0112		12
W-R0113	W-YR0113		13
W-R0114	W-YR0114		14
W-R0115			15
W-R0116	W-YR0116		16
W-R0117	W-YR0117		17
W-R0118	W-YR0118		18
W-R0119	W-YR0119		19
W-R0121	W-YR0121		21
W-R0122	W-YR0122		22
W-R0124			24

14X18 開口式扭力接頭
Open-ended Insert tools



產品編號 Item No.	W (mm)	適用產品 Apply to
W-Y0213	13	WI-30-3 WI-60-3 WI-135-3 WI-200-3 WI-340-3 WI-400-3 WD-I100-2-BT WD-I200-3-BT
W-Y0214	14	
W-Y0215	15	
W-Y0216	16	
W-Y0217	17	
W-Y0218	18	
W-Y0219	19	
W-Y0221	21	
W-Y0222	22	
W-Y0224	24	
W-Y0226	26	
W-Y0227	27	
W-Y0230	30	
W-Y0232	32	
W-Y0234	34	
W-Y0236	36	
W-Y0238	38	
W-Y0241	41	