

# 數位扭力扳手 *Digital Torque Wrench*



- LCD背光顯示
- 順時針及逆時針皆可操作
- 峰值保持(K) 與 扭力追隨(F)模式 (可訂製特殊K模式)
- 四種扭力單位，可供選擇切換:N-m, kgf-cm, lbf-in, lbf-ft  
WM-SD系列為三種扭力單位:cN-m, kgf-cm, in-lb
- 蜂鳴聲、LED燈警示(到達預設扭力值80%時)
- 震動警示(到達預設扭力值90%時)
- 省電模式：2分鐘自動關機 (可訂製不開機模式)
- 記錄使用次數、歷史最大扭力
- 電池款：一般型:AA電池\*2  
                  迷你型:AAA電池\*2
- 充電款:Type-C充電線
- 藍牙款:透過藍牙連線手機，隨時查詢歷史扭力紀錄(最多可瀏覽1000筆)  
可透過Type-C將歷史扭力紀錄傳輸到電腦，以利品質控管
- LCD backlight display
- Both operator for cw, ccw
- Two modes : F(Track) / K(Peak)
- 4 units change: N-m, kgf-cm, lbf-in, lbf-ft  
The WM-SD series offers 3 available torque units: cN-m, kgf-cm, and in-lb
- Warning function : Beep, LED indicator  
(When reach the torque setting value 80%)
- Vibration function : When reach the torque setting value 90%
- Automatically powers off when not in use for 2 minutes  
( The non-shutdown mode can be customized )
- Recording usage frequency and the historical maximum torque
- Battery Type: Standard Type: AA x 2 batteries  
                  Mini Type: AAA x 2 batteries
- Recharge Type: Type-C cable
- Bluetooth Type: Access historical data at any time through Bluetooth connection to the mobile phone.(View up to 1000 records)  
connect via Type-C to save data on the computer



BT-APP



影片-藍牙款  
Video-BT



電腦軟體-藍牙款  
Software-BT



影片-標準款  
Video

充電款技術規格 / Rechargeable Battery Technical Data (Battery : Standard 16650/ Mini 10440)			
電池壽命：充滿電操作時間 Battery life (fully charged used time)	8~10 hrs	充電輸入電壓 Charging Input Voltage	5V=1A
標稱電壓 Nominal Voltage	3.7V	內阻 Internal Resistance	< 60mΩ
充電時間 Recharge Time	Standard 90-120 mins / Mini 60-90 mins		
使用環境 (溫度) Storage conditions (Temperature)	Recharge : 10°C ~ 45°C Discharge : -10°C ~ 60°C Storage : -20°C ~ 25°C (< 1 year) -20°C ~ 40°C (< 3 months) -20°C ~ 50°C (< 1 month)		
使用環境 (濕度) Storage conditions (Humidity)	Work : 20% ~ 85%RH (not condensed) Storage : 40% ~ 85%RH (not condensed)		
標稱容量 Nominal Capacity	Standard 1600mAh / Mini 640mAh		
壽命測試 Lifetime Testing	電池標準充放電300次循環後高於容量80% Capacity remains above 80% after 300 standard charge-discharge cycles.		
內建雙重保護IC電路 Built-in Dual Protection IC Circuit	提供過壓充電、過壓放電、過流充電、過熱過載、 短路等保護 Provides protection against over-voltage charging, over-voltage discharging, over-current charging, overheating, overload, and short circuits.		

電池款技術規格 / Dry Cell Technical Data			
電池壽命：持續操作 Battery Life (continuous operation)	110 hrs (WS: 37 hrs)	操作溫度 Operating temperature	-10°C ~ 60°C
電池壽命：待機模式 Battery Life (Standard Mode)	1 year	儲存溫度 Storage temperature	-20°C ~ 70°C
濕度 Humidity	無凝露可到90% Up to 90% (not condensed)		

共用規格 / Common Specification	
預設值儲存組數 No. of memory parameters	30
LED警示燈	2(1Green + 1Red)
震動警示 Vibration Warning	YES(到達預設扭力90%·震動警示啟動) (Activate when set value reaches 90%)
操作模式 Operating modes	峰值保持(K) / 追隨模式(F) / 角度模式(A) Peak hold (K) / Track (F) / Angle (A)
單位選擇 Torque Units	Nm, kg-cm, lb-ft, lb-in (WM-SD series: cNm, kg-cm, lb-in)
掉落測試 Drop test	1m
振動測試 Shaking test	10G(10Hz→55Hz→10Hz/0.8mm)
耐用度 Durability	Over 10000 cycles
環境測試 Environmental test	PASS 電磁相容測試 EMC test PASS

WM-Q(-BT)



棘輪切換  
Reversible ratchet



棘輪方頭  
Square head



快速脫離  
Quick release

WM-I(-BT)



棘輪切換  
Reversible ratchet



棘輪方頭/插槽  
Square head / Insert



快速脫離  
Quick release

WM-SD(-BT)



強磁吸附  
Magnetic adsorption



Bit 六角插槽  
Bit Insert(Hex)



前拉脫離  
Front pull out

WM-B(-BT)



棘輪切換  
Reversible ratchet



Bit 六角插槽  
Bit Insert(Hex)



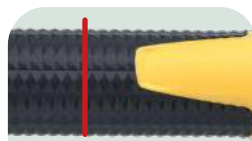
夾持設計  
Clamping Mechanism



藍牙充電款：①電源重置  
②USB插頭 (Type C)  
Bluetooth Type：①Reset  
②USB insert (Type C)



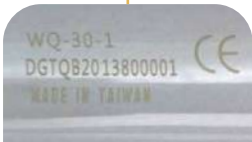
震動警示功能  
Vibration function



校正定位點  
Calibration point



防油防滑設計握柄(專利)  
Non-slip grip handle (patent)



單支出廠序號查詢  
Unique code for each wrench



簡易操作  
Use friendly



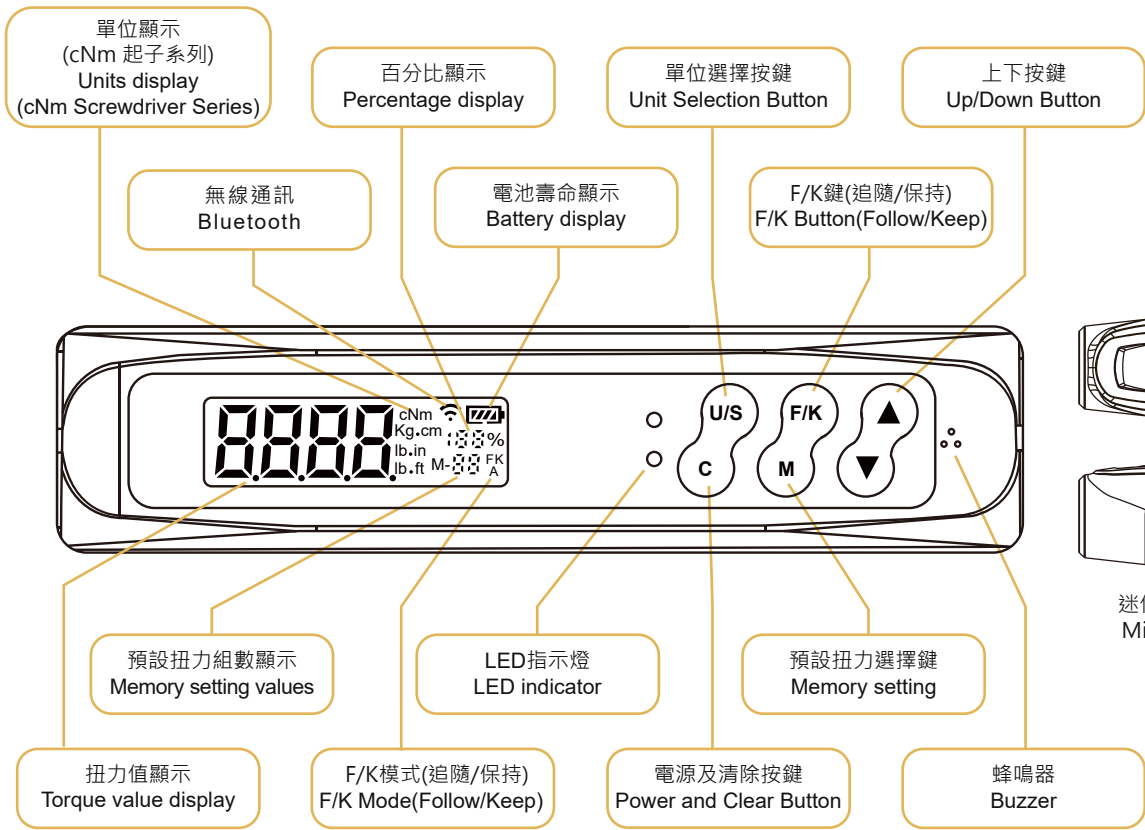
LED提醒/蜂鳴警示  
LEDs (Green/Red)/Buzzer



電池款-使用AAA\*2電池  
藍牙款-使用10440電池  
Battery Type-AAA\*2 batteries  
Bluetooth Type-10440 battery

藍牙充電款：內建電芯保護特規電池，請勿自行更換市售充電電池  
Bluetooth Type：Built-in battery with special specifications for cell protection, please do not replace it with commercially available rechargeable batteries.





迷你型控制按鈕及顯示面板  
Mini control buttons and display panel



加購配件 · 請參考27頁  
Extra purchase accessories  
Please refer to P.27



棘輪方頭/插槽  
Drive / Insert



藍牙功能  
Bluetooth features



扳手內建記憶體 · 可將扳手歷史數據連線手機進行輸出

The wrench has built-in memory, allowing it to connect to a mobile phone to output historical data.

- 配件：收納用鐵製工具箱x1, 出廠校驗報告(符合ISO品質認證規範)x1, 說明書(中/英)x1, 棘輪接頭x1, 藍牙-充電款: Type-C 充電線  
電池款: AAA電池x2, 迷你螺絲起子(更換電池用)x1
- Content : Storage steel box x1, Certificate of calibration report (Using ISO specification) x1, User guide(Bilingual) x1, Ratchet insert tool x1, Bluetooth Type: Type-C cable, Battery Type: Mini screwdriver(replace the battery) x1

SPECIFICATIONS:

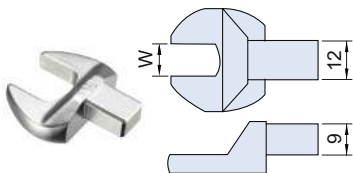
※Unit Conversion : 1 Nm = 10.2 kgf-cm = 0.738 lbf-ft = 8.851 lbf-in

產品編號 Item No. 電池款 藍牙-充電款 Battery Type Bluetooth Type	精度 Accuracy	插槽 Insert	棘輪方頭 Drive	棘輪齒數 Ratchet Teeth	顯示及設定範圍 Setting Range	建議使用範圍 Suggested Range	解析度 Resolution	扳手長度 Length(mm)	扳手重量 Weight(g)
WM-I06-1 WM-I06-1-BT	CW:±3% CCW:±4%	9x12mm	1/4"	72	0.3~6 Nm	0.9~6 Nm	0.01 Nm	255	270
WM-I15-1 WM-I15-1-BT					0.75~15 Nm	2.25~15 Nm			
WM-I25-1 WM-I25-1-BT					1.25~25 Nm	3.75~25 Nm			

註：精度的扭力範圍在最大操作值的20%~100%

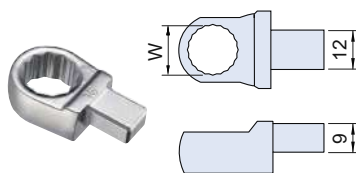
Notes: Accuracy guaranteed at 20% to 100% of full scale.

9X12 開口式扭力接頭  
Open-ended Insert tools



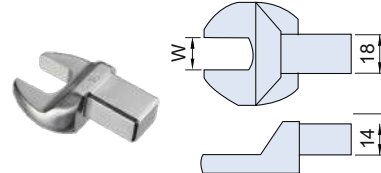
產品編號 Item No.	W (mm)	適用產品 Apply to	
W-Y0107	7	WM-I06-1 WM-I15-1 WM-I25-1 WI-30-1 WI-60-2 WI-135-2 WD-I30-1-BT	
W-Y0108	8		
W-Y0109	9		
W-Y0110	10		
W-Y0111	11		
W-Y0112	12		
W-Y0113	13		
W-Y0114	14		
W-Y0115	15		
W-Y0116	16		
W-Y0117	17		
W-Y0118	18		
W-Y0119	19		
W-Y0121	21		WI-30-1
W-Y0122	22		WI-60-2
W-Y0123	23		WI-135-2
W-Y0124	24		WD-I30-1-BT

9X12 梅花式扭力接頭  
Ring Insert tools



產品編號 Item No.	W (mm)	適用產品 Apply to	
W-R0107	7	WM-I06-1 WM-I15-1 WM-I25-1 WI-30-1 WI-60-2 WI-135-2 WD-I30-1-BT	
W-R0108	8		
W-R0109	9		
W-R0110	10		
W-R0111	11		
W-R0112	12		
W-R0113	13		
W-R0114	14		
W-R0115	15		
W-R0116	16		
W-R0117	17		
W-R0118	18		
W-R0119	19		
W-R0121	21		WI-30-1
W-R0122	22		WI-60-2
W-R0123	23		WI-135-2
W-R0124	24		WD-I30-1-BT

14X18 開口式扭力接頭  
Open-ended Insert tools



產品編號 Item No.	W (mm)	適用產品 Apply to
W-Y0213	13	WI-30-3 WI-60-3 WI-135-3 WI-200-3 WI-340-3 WI-400-3 WD-I100-2-BT WD-I200-3-BT
W-Y0214	14	
W-Y0215	15	
W-Y0216	16	
W-Y0217	17	
W-Y0218	18	
W-Y0219	19	
W-Y0221	21	
W-Y0222	22	
W-Y0224	24	
W-Y0226	26	
W-Y0227	27	
W-Y0230	30	
W-Y0232	32	
W-Y0234	34	
W-Y0236	36	
W-Y0238	38	
W-Y0241	41	